

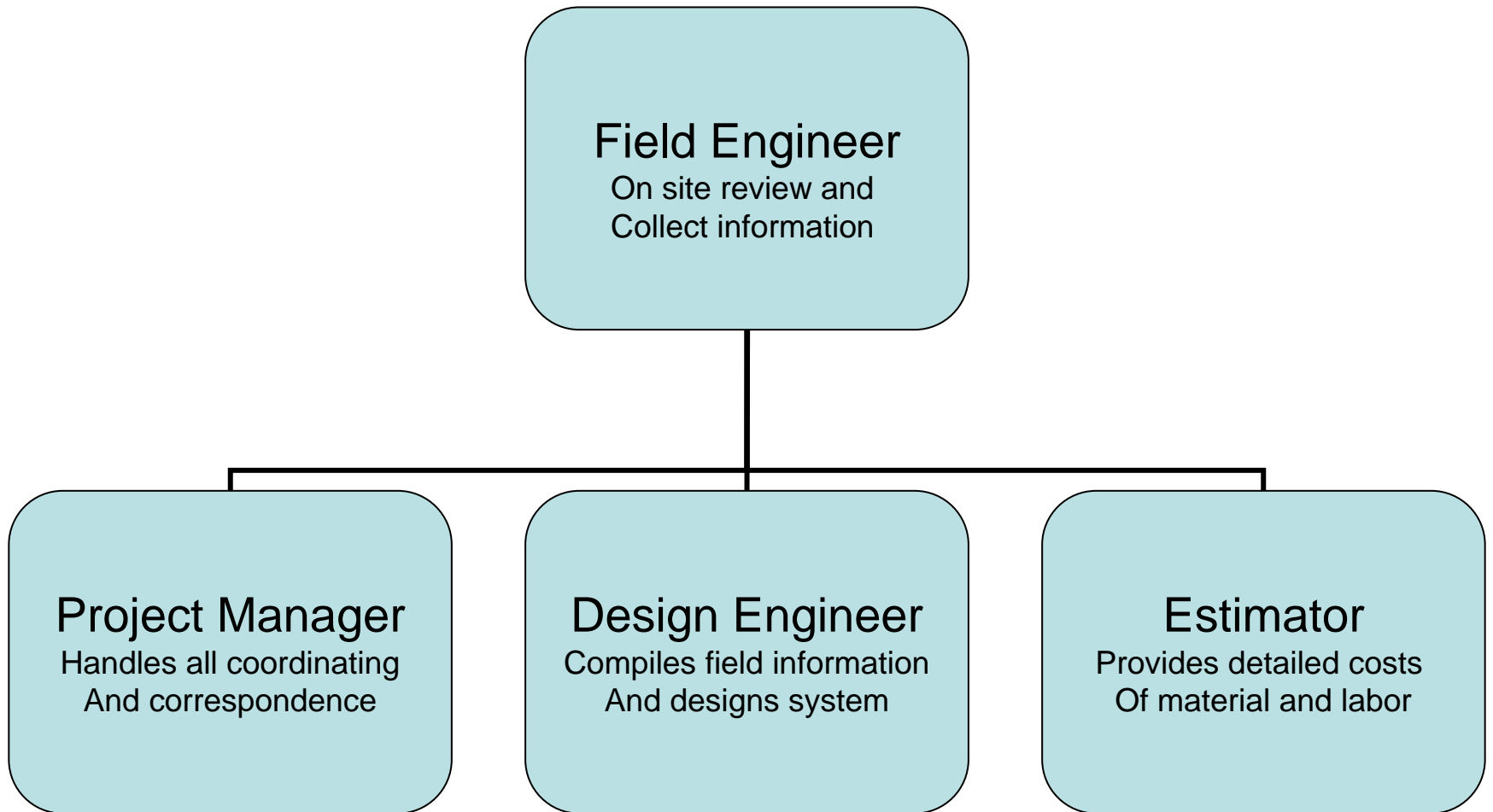


**National Signal Corporation**

**CONSTRUCTION**

**1-800-468-8644 Ext. 17**

# How it begins



# DIAGNOSTIC REVIEW

- Each project begins with a on-site review.
- Here crossing details are discussed keeping in mind traffic patterns and train movements.
- Every site is carefully studied and detailed notes are made with respect to.
- Traffic pre-emption
- Train speed
- Vehicle speed
- Clearance time required
- Adjacent crossings that may overlap circuits.
- Switching movements in area
- Type of system and crossing equipment required to minimize traffic interruption



**NSC FIELD ENGINEER ON SITE MEETING  
WITH LOCAL ROAD AUTHORITIES**

# Project Manager



- **At NSC our project manager is always in contact with all concerning parties keeping them up to date on project developments.**
- **Each phase of the project is monitored closely watching for unexpected snags.**
- **By utilizing this position we can keep the project moving smoothly through the system and provide our customers with a one call information center.**
- **Project status can also be found by visiting our web-site at [www.nationalsignal.com](http://www.nationalsignal.com)**

# Design Group

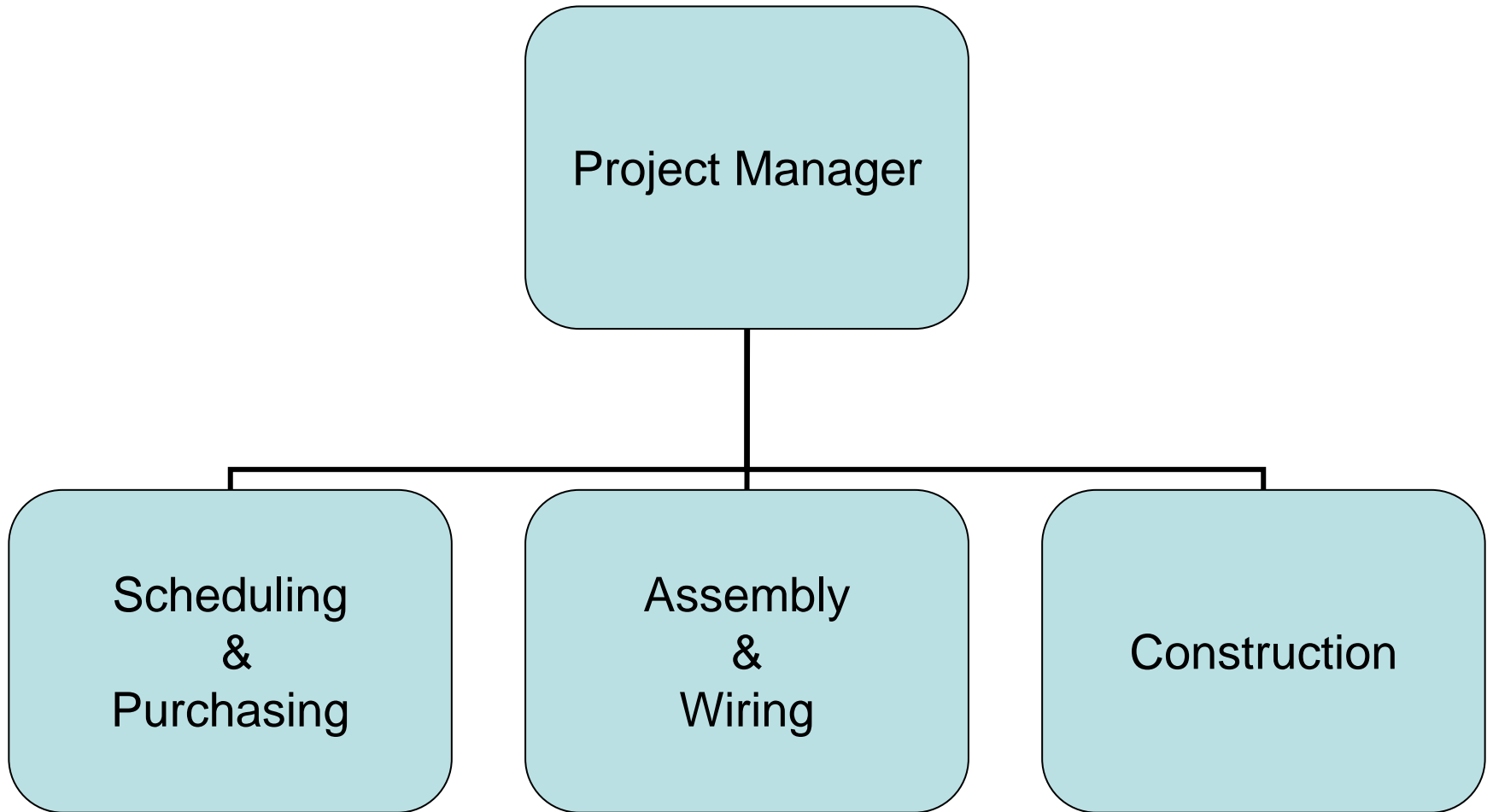
- Here all field information is compiled and sorted.
- Our design staff then proceeds making a detailed material list which is passed on to the estimating department for pricing.
- Circuit drawings are then designed to meet specific criteria of crossing.
- Once drawings are complete, they are delivered to the project manager to obtain approval.
- Here at NSC we believe in supporting the Michigan Department of Education cooperative program, by involving the young adults of our community in two areas.
- Engineering
- Application wiring



# Project costing

- Quality, cost and delivery time is of the utmost importance.
- All material for projects are priced out using a vast network of suppliers.
- Each supplier must meet stringent requirements to be a qualified vendor to NSC.
- Our estimators provide detailed itemized costs, breaking down each category material, labor and equipment needed to complete project.
- Once this is complete estimates are sent back to the project manager for review and delivery to client.

# How it gets done



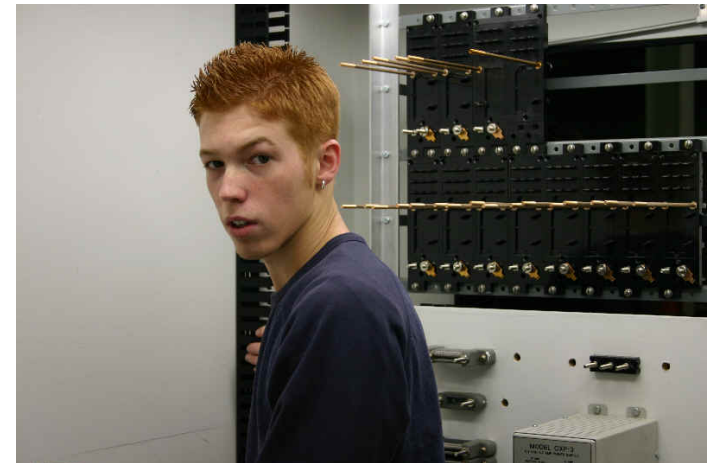
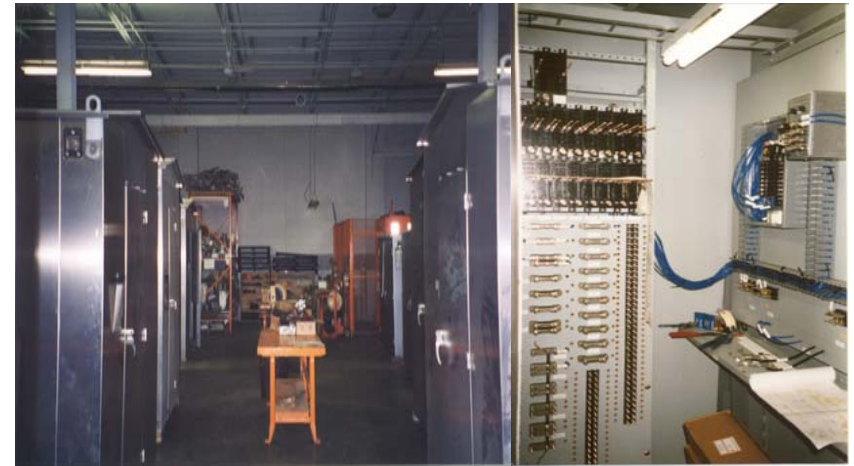
# Scheduling & Purchasing

- **Once all customer approvals have been given the project manager delivers job packet to the scheduling and purchasing department.**
- **Here material is ordered and wiring and construction heads are notified of delivery dates.**
- **A tentative spot in assembly for wiring is set and reported to the project manager.**
- **Construction team is given date of final assembly.**
- **One of our construction crews are assigned the project with estimated install dates.**
- **The scheduling manager reviews and keeps track of each project assuring there are no conflicting project dates.**
- **He continues to monitor suppliers delivery and job extensions that arise from time to time. This keeps the project manager up to date of any changes or delays.**
- **Should unforeseen situations occur alternative measures are explored.**
- **This information is then immediately relayed to the customer.**



# Assembly & Wiring

- **Once final prints are received wire tags are inputted into the tag system and printed, identification tags are also completed at this time.**
- **Here equipment is mounted, wire channels installed and controls wired.**
- **Once complete entire system is verified and tested before shipping.**



**One of our Co-op Team Members**

# Installation

- **NSC crews are made-up of only highly trained personal.**
- **Each crew member is skillfully trained before being placed in the field.**
- **Once assigned to a crew they wore a green hardhat for 90 days. This is a visual reminder to all his training was complete, but just now applying it to actual field situations.**
- **To keep the highest quality of workmanship and safety, we only use our employees for each installation.**
- **Once on track safety requirements have been met, our crews review project tasks and discuss procedures before beginning any work.**
- **Upon completion of construction each site goes through a thorough inspection consisting of:**
  - **Operational testing**
  - **Compliance to FRA, State and Customer requirements**
  - **Site appearance**
  - **Customer satisfaction**





# Thank You



**National Signal Corporation**

**For customer service please call: 1-800-468-8644 Ext. 17**